



compatible XBOX

AIR WHEEL™

[Multi Platform]
LINE-UP

WIRELESS - VIBRATION MOTION SENSING

Sistema Controllo di Trazione:
consente una maggiore
stabilità su strada
Traction Control System:
for better on-road stability

TCS evo
™
Traction Control System



DRIVE IN THE AIR



**LEGGERO e
SEMPLICE**

da usare nella posizione
che preferisci



IN PIEDI e
IN MOVIMENTO



CON PIANO DI
APPOGGIO



SEDUTI



SORAIATI

info@atomic-accessories.com
atomic-accessories.com

ATOMIC
ACCESSORIES

HOW TO USE THE AIR WHEEL

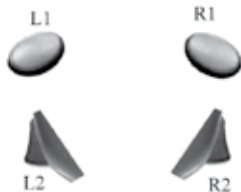
ENGLISH

Buttons and leds Air Wheel

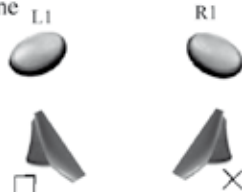


Factory settings of Gas/Brake & gear shift buttons

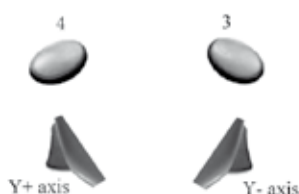
For PS3



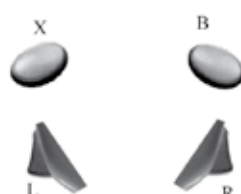
For PS2/PS One



For PC



For Xbox



Getting Started

Before starting to play please do the following steps first

1. Insert 3 AAA alkaline/rechargeable batteries.
2. Push the power switch to "On" position.
3. **IMPORTANT:** Remove the locking pin.
4. Plug the receiver to the console. If PS3/Xbox or PC is to be played with, connect the receiver to the USB/Xbox adapter first.
5. Select "PS3/PC" for PS3 or PC.

Operating modes ("MODE" led legenda)

If the "Mode" led is lightened in red, the Air Wheel is in operating mode.

That is the mode to play games

When Red light is blinking slowly, the wheel is in Fast steering sensitivity mode.

In this mode, the steering sensitivity is faster to suit for some fast response required games.

When Red light is blinking quickly, the wheel is in F1 mode. In this mode, the steering sensitivity is even faster to suit for requirement of Formula One games.

If the "Mode" led is lightened in orange color instead, the wheel is in Program mode. The mode is used to program Button Gear +, Gear -, Gas and Brake to any fire button or Y axis of right joystick.

Ultimate vibration

Vibration takes place interactive with the games when vibration is selected to be "On" inside the game. In PC, vibration refers to force feedback. Some games allow to set the degree of feedback force to different conditions, like road effect, collision, engine effect, etc. Try these parameters to obtain optimal vibration effects.

Programming the Gas button

Gas and Brake buttons are preprogrammed already. Please check the default setting in the previous section.

If Gas and Brake buttons reprogramming is needed, please follow these steps:

1. Identify the button that is used as the accelerator.
2. Press the "MODE" button until orange light is in the game on.
3. Press and hold the Gas button.
4. Now press the buttons identified at step 1 to associate it to the gas button. A vibration indicates that programming is done.
5. Press the "MODE" button to original operating mode.



The same procedure applies to program the Brake button.

If needed, the direction pad can be used to select up-down position of right joystick.

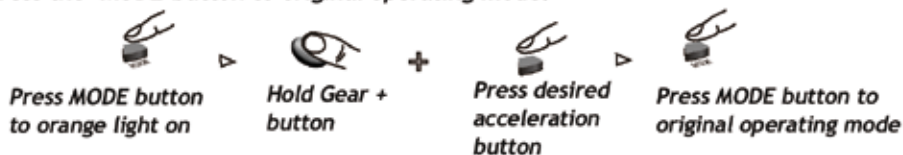
The gas and brake assignment can be to fire buttons or right joystick of a game controller. For PS2/PS1, gas is X and brake is [] as default setting for most racing games; while for PS3, gas is R2 and brake is L2. However, in many games, gas can be set to upper half of Y axis of right joystick, and brake to lower half of Y axis of right joystick. Therefore, this possibility is allowed.



Programming the Gear buttons for manual transmission

There are programmed button functions for both "Gear +" and "Gear -" buttons. These settings are suitable for most racing games. If in a particular game the buttons for gear shift up and shift down are not the one preset, please do the following steps to program them.

1. Every game has different buttons for gear shifting. Find out the Up Shift button first.
2. Press the "MODE" button until orange light is turned on.
3. Hold the "Gear +" button.
4. Press the button that was identified as the Up Shift button. A vibration indicates completion of programming.
5. Press the "MODE" button to original operating mode.



The same procedure applies to program the Down shift to "Gear -" button accordingly.

Steering sensitivity adjustment

There are 3 steering sensitivities for different types of games, namely Normal, Fast and F1. Normal mode is for general racing games, like Gran Turismo 4. Fast mode is for some racing games needing quick response, like Colin McRae Rally. F1 mode is for Formula One games.



- Press MODE button > Normal mode: red light steady
- Press MODE button > Fast mode: red light blinking slowly
- Press MODE button > F1 mode: red light blinking quickly
- Press MODE button > Program mode: orange light steady
- Press MODE button > Normal mode: red light steady

Traction control

Traction control is a computer control of both gas and brake to an optimum value during cornering. There are 2 stops on the Brake button. The first stop is normally used to brake a car when entering a corner. If more braking force is required, step to the second stop.

Gas button can be held at maximum position throughout the whole race. Just press Brake button at corners. Stop at first stop, if not enough braking force, press to second stop. Release Brake button when exiting the corner. As braking force is more gradual, braking can be applied earlier to have a more steady turning.



Blinking



Steady



Traction control can be switched off by pressing the "Traction Control" button once. The light will turn off.



Setting up the Air Wheel for PC

Minimum System Requirements for PC

1. IBM PC or compatible with Pentium® III 350 or above processor, and 512 MB RAM or more.
2. USB™ port.
3. Microsoft Windows® 98 Se, Me, 2000, XP or Vista™ 32bit.
4. Direct X 8.0 or above installed.

General drivers installation guidelines under Windows® operating systems

1. Connect up the adapter to the PS2 plug of receiver first.
2. Make sure the switch "PS3 PC" is on "PC" side.
3. Connect the USB plug to your computer. A message of "New hardware detected" will be displayed and a HID driver will be installed automatically.
4. Then, insert CD ROM included into the drive.
5. Adialog will be popped up, run according to instructions on screen.

NOTICE:

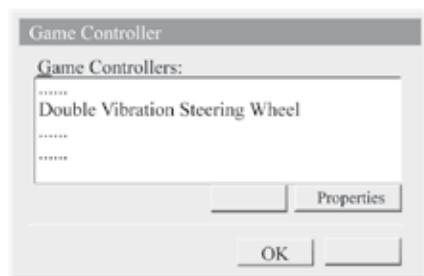
The reciever must be connected to computer and HID driver to be installed before the installation of driver from disk.



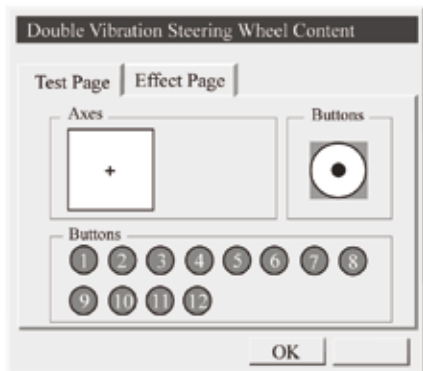
6. After installation is completed, go to Windows® Control Panel.
7. Double click on "Game Controllers" icon.



8. Select "Double Vibration Steering Wheel" from the list of Game Controller.
9. Click "Properties".



10. A panel will open, allowing to verify all fire buttons and their functions. Feel free to turn the steering wheel, press the gas or brake buttons...
11. The "Effect Page" is devoted to Test vibration: turn the steering wheel and press the gas/brake buttons to test it.



12. You are ready to play now.
13. While playing, if needed please use the game configuration menu to set the game controller device to "Double Vibration Steering Wheel".
14. Then, you can program the buttons on the steering wheel and the gear shift to match the corresponding functions in the game.
15. In some games, the force feedback intensity can be set to different degrees for different force type (for example: Collision, Road Grip, etc). Feel free to modify these settings to get a satisfactory force feeling.
16. In some games, acceleration and brake are configured by default to some buttons. In this case, sometimes it is possible to set them to present configuration of Gas and Brake pedals, sometimes it isn't. If not, program the foot pedals to the corresponding buttons.

Troubleshooting

Just after having plugged the steering wheel to your computer, Windows® will detect it and come up with a "New hardware is detected" pop-up. Then, the procedure shown before in the PC installation section will install the proper HID (Human Interface Device) driver.

If no pop-up menu shows when the device is plugged in the first time, please check the following issues:

1. If the wheel has been connected to a USB™ HUB, try to connect it directly to the computer.
2. Otherwise, try another USB™ port.
3. Avoid plugging the wheel in during the execution of any software, particularly during a game. Please do it at root directory instead.
4. If the wheel has been connected during the computer's power-up, please unplug it and plug it in again once the computer start-up is completed.

At least, you may also try to manually force the device installation. Go to the Control Panel and choose "Add New Hardware". Then, follow the on-screen instructions.

Setting up Air Wheel for PS3

Before power up the PS3, do the following procedure.

1. Connect the adapter to the receiver first.
2. Make sure the switch "PS3 PC" is on "PS3" side.
3. Connect the USB plug to your PS3.
4. Press PS button once. Check whether Air Wheel is working.



Notice:

If the Air Wheel is plugged in inside a game, it may not be configured at Port 1 position. You need to set it to Port 1 to play, unless you want it to be at Port 2.

Press and hold PS button for a while, a black screen will come up. Select "Assign Controller Ports!" and enter by pressing "0" button. Press "down" button of D-pad to select Port 1. Then, press "0" button to confirm.

Setting up Air Wheel for Xbox

1. Connect up the adapter to the steering wheel's receiver first.
2. Make sure the switch "PS3 PC" is on "PC" side.
3. Connect to your Xbox and play.



Notice

The normal function of the product may be disturbed by Strong Electro Magnetic Interference. If so, simply reset the product to resume normal operation by following the instruction manual. In case the function could not resume, please use the product in other location.



compatible XBOX

AIR WHEEL™

[Multi Platform]

**WIRELESS - VIBRATION
MOTION SENSING**



➔ Collegati subito al sito
www.atomic-accessories.com
e scopri gli altri prodotti ATOMIC
della linea MULTIPIATTAFORMA

➔ For information about other Atomic
products in our multi-platform
line-up, please visit our website at
www.atomic-accessories.com

Easy use

SKY is NOT the LIMIT!