

PC WINDOWS LINE-UP



Multi Platform LINE-UP

O F F I C I A L



Sagaris



PS2 PSone PlayStation LINE-UP

PS3 PLAYSTATION 3 LINE-UP NOW FOR

SPORT RACING STEERING WHEEL *British Driving Style* *EVO*

atomic-accessories.com



ATOMIC ACCESSORIES

O F F I C I A L



Multi Platform LINE-UP

Sagaris



SPORT RACING STEERING WHEEL *British Driving Style* *EVO*

info@atomic-accessories.com
atomic-accessories.com

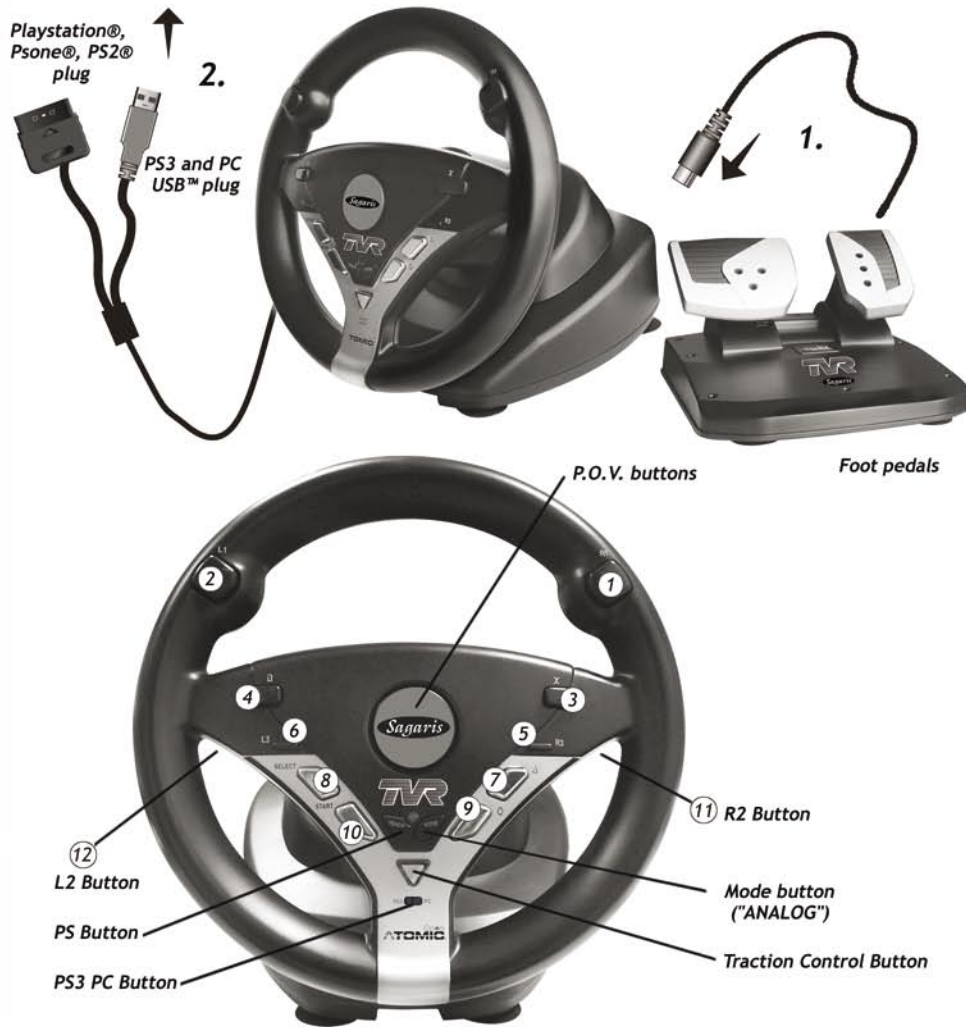
ATOMIC ACCESSORIES

HOW TO USE TVR SPORT RACING STEERING WHEEL *evo*

ENGLISH

Setting up the steering wheel

1. Connect the foot pedals to the base of the steering wheel.
2. Ensure that your game console is switched off. Connect the system jack to the controller socket of your console.
3. If it is going to be connected to PlayStation®3, make sure that the "PS3-PC" switch is on PS3 position.



Setting up for PlayStation®3

1. Before powering up the console, put the "PS3-PC" switch on "PS3" position.
2. Connect the USB™ plug to your Playstation®3.
3. Power up the console, the steering wheel will be configured to Port 1.

Important: the steering wheel must be configured to Port 1 to play games.

If the steering wheel is plugged in after the console is powered up, it will be configured not at Port 1 position. You need to set it to Port 1 to play, unless you want it to be at Port 2.

To check what position of steering wheel is, press and hold PS button for a while when the hard disk is not being accessed. A black screen will come up. Select "Assign Controller Ports" and enter by pressing "O" button. Press "down" button of D-pad to select Port 1. Then, press "O" button to confirm. Press "X" to exit.

The steering wheel is now ready to play games. However, if Gas/Brake pedal is required to be programmed to other buttons than the default ones for your favourite game, the following procedure will lead you to do that.

Programming the Foot Pedals

Foot Pedals are preprogrammed already. Please check the default setting at the end of the instruction manual. If reprogramming is needed:

1. Identify the button that is used as the accelerator.
2. Press the "MODE" button until orange light is on.
3. Press and hold the Foot Pedal which you want to use as the accelerator.
4. Press the button that was used as the accelerator. The steering wheel will vibrate to indicate that programming is done.
5. Repeat the above steps to program the brake pedal.
6. Press the "MODE" button once to go back to the original operating mode.



If needed, the direction pad can be used to select up-down position of right joystick.

The gas and brake assignment can be to fire buttons or right joystick of a game controller. For PS2/PS1, gas is X and brake is □ as default setting for most racing games; while for PS3, gas is R2 and brake is L2. However, in many games, gas can be set to upper half of Y axis of right joystick, and brake to lower half of Y axis of right joystick. Therefore, this possibility is allowed.



Steering sensitivity adjustment

There are 3 steering sensitivities for different types of games, namely Normal, Fast and F1. Normal mode is for general racing games, like Gran Turismo 4. Fast mode is for some racing games needing quick response, like Colin Mcrae Rally. F1 mode is for Formula One games.

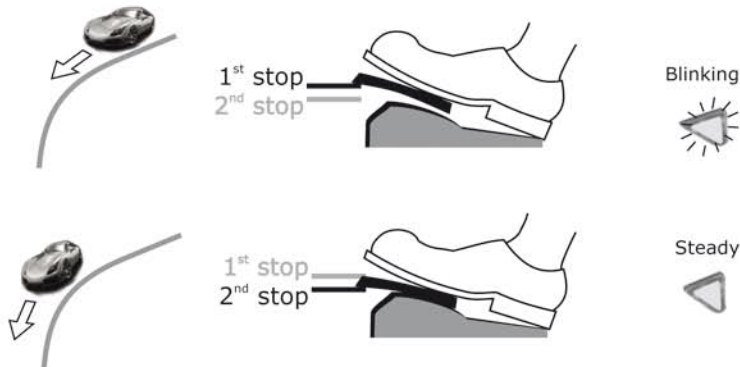


- Normal mode: red light steady
- Press MODE button > Fast mode: red light blinking slowly
- Press MODE button > F1 mode: red light blinking quickly
- Press MODE button > Program mode: orange light steady
- Press MODE button > Normal mode: red light steady

Traction control

Traction control is a computer control of both gas and brake to an optimum value during cornering. There are 2 stops on the Brake button. The first stop is normally used to brake a car when entering a corner. If more braking force is required, step to the second stop.

Gas pedal can be held at maximum position throughout the whole race. Just press Brake button at corners. Stop at first stop, if not enough braking force, press to second stop. Release Brake button when exiting the corner. As braking force is more gradual, braking can be applied earlier to have a more steady turning.



Traction control can be switched off by pressing the "Traction Control" button once. The light will turn off.



HOW TO USE TVR SPORT RACING STEERING WHEEL evo ON PC

Minimum System Requirements for PC

1. IBM PC or compatible with Pentium® III 350 or above processor, and 512 MB RAM or more.
2. USB™ port.
3. Microsoft Windows® 98 Se, Me, 2000, XP or Vista™.
4. Direct X 8.0 or above installed.

General drivers installation guidelines under Windows® operating systems

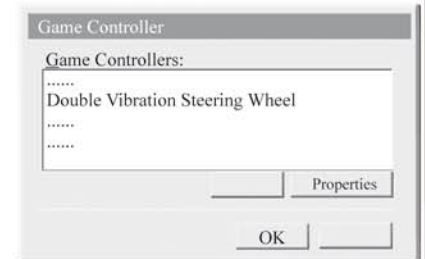
Make sure that the "PS3-PC" switch is switched on "PC" side. Plug in the USB™ plug to the PC. A system sound will be heard to indicate that the USB™ device has been detected by Windows®.

In case a system dialog pops up to begin installation, simply exit it.

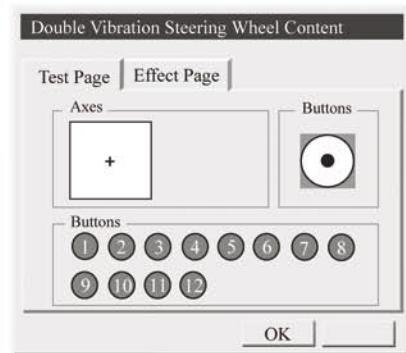
1. Insert the included CD ROM into the drive. Follow installation instructions on screen until installation is successfully done.
2. After installation is completed, go to Windows® Control Panel.
3. Double click on "Game Controllers" icon.



4. Select "Double Vibration Steering Wheel" from the list of Game Controller.
5. Click "Properties".



6. A panel will open, allowing to verify all fire buttons and their functions. Feel free to turn the steering wheel, step the foot pedals ...
7. The "Effect Page" is devoted to Test vibration: turn the steering wheel and press the foot pedals to test it.



8. You are ready to play now.
9. While playing, if needed please use the game configuration menu to set the game controller device to "Double Vibration Steering Wheel".
10. Then, you can program the buttons on the steering wheel and the gear shift to match the corresponding functions in the game.
11. In some games, the force feedback intensity can be set to different degrees for different force type (for example: Collision, Road Grip, etc). Feel free to modify these settings to get a satisfactory force feeling.
12. In some games, acceleration and brake are configured by default to some buttons. In this case, sometimes it is possible to set them to present configuration of Gas and Brake pedals, sometimes it isn't. If not, program the foot pedals to the corresponding buttons.

Troubleshooting

Just after having plugged the steering wheel to your computer, Windows® will detect it and come up with a "New hardware is detected" pop-up. Then, the procedure shown before in the PC installation section will install the proper HID (Human Interface Device) driver.

If no pop-up menu shows when the device is plugged in the first time, please check the following issues:

1. If the wheel has been connected to a USB™ HUB, try to connect it directly to the computer.
2. Otherwise, try another USB™ port.
3. Avoid plugging the wheel in during the execution of any software, particularly during a game. Please do it at root directory instead.
4. If the wheel has been connected during the computer's power-up, please unplug it and plug it in again once the computer start-up is completed.

At least, you may also try to manually force the device installation. Go to the Control Panel and choose "Add New Hardware". Then, follow the on-screen instructions.

Factory Foot Pedals settings

For Playstation®3



For Playstation®, Psone, PS2



For PC



Playstation®, PSone, Playstation®2 and PC: selecting different operating modes

The wheel has two different operating modes:

- analogic mode - Dual Shock®2 /Dual Shock® (the red light of "MODE" button is on)
- digital mode (the green light of "MODE" button is on)



Dual Shock®2/
Dual Shock® analogical joypad

Digital joypad



Press "MODE" button for one time, the green light Switch is on: the wheel is in DIGITAL mode
Press "MODE" button for another time, the red light Switch on: the wheel is in ANALOG mode

Technical support

Write to: info@atomic-accessories.com

For more information about Atomic Accessories product please visit us: atomic-accessories.com



Atomic Accessories and its logo are registered trademarks. All trademarks and logos are the property of their respective owner. This product is not sponsored, endorsed or approved by Microsoft® or Sony®.